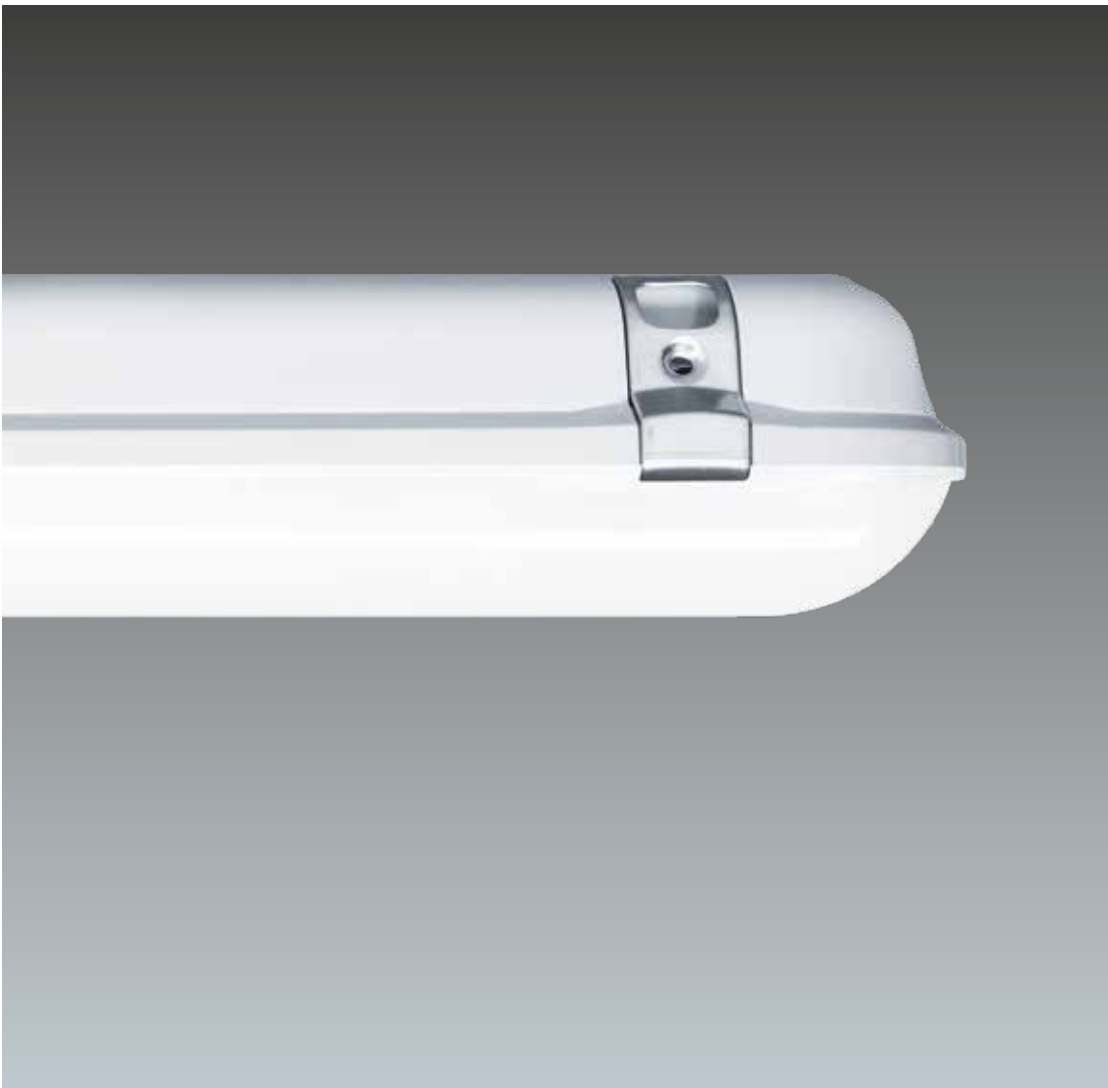


THORN_{eco}

THORN_{eco}

Economical LED Lighting



THORNeco **Economical LED Lighting**

We offer an economical range of state-of-the-art LED luminaires that are ideal for the like-for-like replacement of all traditional lighting sources within Office, Education, Industrial and Outdoor Applications.

Our products are designed to fulfill the needs of the modern customer by providing an increased quality of lighting, substantial energy savings and a longer life span. Our range is simple to install, requires minimal maintenance and need fewer replacement parts.

We are supported by the technical competence and experience of the Zumtobel Group, making us the number one choice for economical LED lighting solutions.



5 Year Warranty

As a globally leading luminaire manufacturer, Thorn Lighting provides a five-year warranty for its complete product range within all European Countries.

Amy LED

Recessed LED downlight



Ordering Guide

Description	Wt (kg)	SAP Code	Cat. No.
AMY 100 LED DL 800 830	0.18	96665583	AY800Z3K
AMY 100 LED DL 800 840	0.18	96665584	AY800Z4K
AMY 150 LED DL 1000 830	0.26	96628352	AY1000Z3K
AMY 150 LED DL 1000 840	0.26	96628353	AY1000Z4K
AMY 150 LED DL 1500 830	0.26	96665585	AY1500Z3K
AMY 150 LED DL 1500 840	0.26	96665586	AY1500Z4K
AMY 200 LED DL 2000 830	0.36	96665587	AY2000Z3K
AMY 200 LED DL 2000 840	0.36	96665588	AY2000Z4K

Emergency versions

AMY 150 LED DL 1000 830 E3	0.66	96665848	AY1000ZE3K
AMY 150 LED DL 1000 840 E3	0.66	96665849	AY1000ZE4K
AMY 150 LED DL 1500 830 E3	0.66	96665844	AY1500ZE3K
AMY 150 LED DL 1500 840 E3	0.66	96665845	AY1500ZE4K
AMY 200 LED DL 2000 830 E3	0.76	96665846	AY2000ZE3K
AMY 200 LED DL 2000 840 E3	0.76	96665847	AY2000ZE4K

830 - 3000K, 840 - 4000K

Application

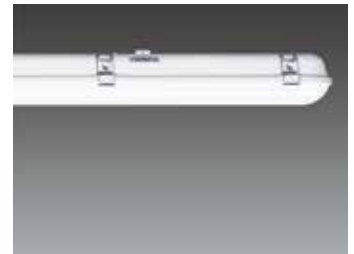
- Corridors
- Offices and meeting rooms
- Reception areas
- Schools and universities

Overview

- Consistent light output with no shadowing
- 100-105, 150mm and 200mm cut-outs, similar to traditional products
- Available lumen packages: 800lm (9W), 1000lm (12W), 1500lm (16W), 2000lm (21W), up to 95 Lm/W
- Colour temperatures: 3000K and 4000K
- High efficacy, up to 80% energy savings compared to compact fluorescent
- 3hr emergency version available

Julie LED

IP65 LED luminaire



Ordering Guide Supplied complete with mounting kit

Description	Wt (Kg)	SAP Code	Cat. No.
JULIE 1200 LED IP65 4000 840	1.50	96665577	JU4000Z4F
JULIE 1500 LED IP65 4000 840	1.56	96628396	JU4000Z5F
JULIE 1500 LED IP65 6000 840	1.95	96665580	JU6000Z5F

Emergency versions

JULIE 1200 LED IP65 4000 840 E3	1.90	96628397	JU4000ZE4F
JULIE 1500 LED IP65 4000 840 E3	1.96	96628397	JU4000ZE5F
JULIE 1500 LED IP65 6000 840 E3	2.35	96665582	JU6000ZE5F

Spare part

JULIE LED STANDARD ACCESSORY KIT (SPARE PARTS)	96628409	JUACCKIT
--	----------	----------

Application

- Industrial and storage facilities
- Workshops
- Car parks
- Open plan mezzanine floors
- Underpasses

Overview

- High quality opal diffuser ensures uniform lighting without visible spots
- Stainless steel clips
- Lengths of 1232mm (4000lm) and 1532mm (4000lm and 6000lm), 100Lm/W
- Colour temperature: 4000K
- High efficacy, up to 60% energy savings compared to T8 fluorescent
- 3hr emergency version available

Ordering Guide Supplied complete with starter lead, mounting kit, connector lead and interconnector.

Description	Wt (kg)	SAP Code	Cat. No.
MINILUX2 LED900-L830 HF L570	0.17	96644485	MI900Z3K2F
MINILUX2 LED900-L840 HF L570	0.17	96644486	MI900Z4K2F
MINILUX2 LED1800-L830 HF L1170	0.29	96644483	MI1800Z3K4F
MINILUX2 LED1800-L840 HF L1170	0.29	96644484	MI1800Z4K4F

Spare part

MINILUX2 LED ACCESSORY KIT (SPARE PARTS)	96628411	MIACCKIT
--	----------	----------

830 - 3000K, 840 - 4000K

Application

- Cove lighting
- Convenience store
- Cabinet lighting
- Residential applications

Overview

- Shadow free continuous light thanks to well-designed end cap
- High quality diffuser ensures uniform light without visible spots
- Lumen packages: 900lm (10W), 1800lm (18W), 90Lm/W
- Colour temperatures: 3000K and 4000K
- High efficacy, 40% energy savings compared to T5 fluorescent
- The fitting can be mounted individually or continuously (max. 10 battens)

Compact LED batten



Moduline LED II

Recessed LED luminaire



Ordering Guide

Description	Wt (kg)	SAP Code	Cat. No.
MODULINE LED II 606 3200LM HF L830	3.0	22662551	MO3200Z3K
MODULINE LED II 606 3200LM HF L840	3.0	22662560	MO3200Z4K

Emergency version

MODULINE LED II 606 3200LM HF L840 E3	3.4	22170104	MO3200ZE4K
---------------------------------------	-----	----------	------------

Accessories

OMEGA LED SURFACE MTG KIT 597	96241603	OMS3250KIT
SLIM SURFACE MOUNT KIT 597X597*	96628003	OMS6X6KIT

*These kits are not suitable with emergency luminaires

830 - 3000K, 840 - 4000K

Application

- Breakout areas
- Commercial buildings
- Circulation areas

Overview

- High power LED module and high performance optics deliver optimal luminaire efficiency
- Lay in installation or surface mount using accessory
- 3200lm (32W), 100Lm/W
- Colour temperatures: 3000K and 4000K
- 40% energy savings compared to T5 fluorescent

THORN_{eco}

Thorn Lighting Limited

Durhamgate, Spennymoor,
County Durham, DL16 6HL
Tel: 0844 855 4810
uk.quotations@thornlighting.com

www.thornlighting.co.uk

Thorn Lighting (Ireland) Limited

Century House, Harolds Cross Road,
Dublin 6W, Ireland
Tel: +353 (0) 1 4922 877
Fax: +353 (0) 1 4922 724
dublinsales@zumtobelgroup.com

www.thornlighting.ie